

2<sup>nd</sup> tract  
W<sup>m</sup> H. Harrison et al.  
to  
Leam. Elec Lt. & Pr. Co.  
3/2/1922  
389-385

1<sup>st</sup> tract  
W<sup>m</sup> H. Harrison et al.  
to  
Leam. Elec Lt. & Pr. Co.  
3/2/1922  
389-385

NASHUA  
RIVER

464

464

465

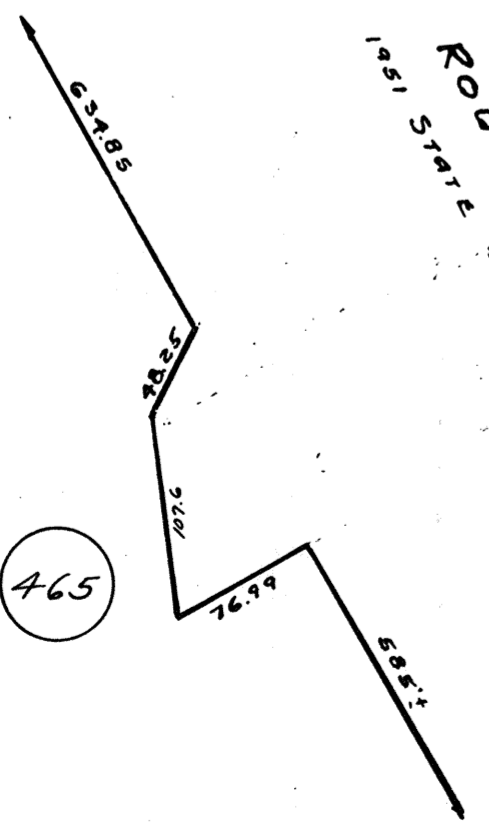
465

4

4Ac. 15,721 Sq. Ft.

378

465



NEW ROUTE 2  
1951 STATE LAYOUT

BASE LINE

